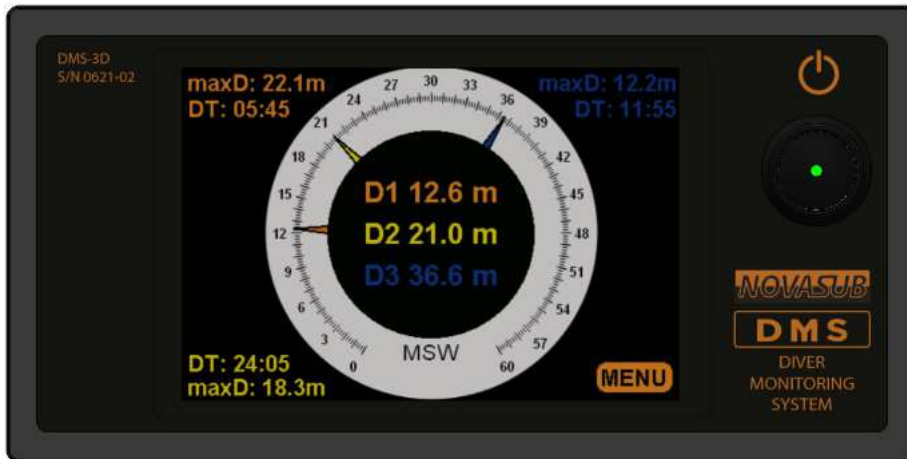


## DMS New Diver Monitoring System showcase

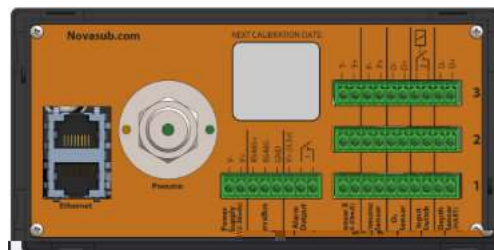
## Expected in Q3 2022

Because of the increasing demand for a reliable and user-friendly system to log depth and dive time of divers we have decided to update our current digital depth gauge (DDG2) to a new and modern system. The DMS will be the same size as the DDG2 and can be used as a direct replacement. The DMS will have more logging capabilities and use an extensive database to manage these logs.

One of the main features is the possibility to connect an smartphone, tablet or PC to the device. This device can then be used to add data to the DMS or to retrieve the logs.



Screen layout is only as example



### Possible sensors per diver:

Depth sensor	A digital depth sensor. This can be either a HART or a 4-20mA sensor.
Oxygen	An oxygen cell that measures the oxygen percentage in the divers breathing gas.
Gas pressure	A low pressure sensor that guards the pressure of the divers breathing gas.
Pneumo	A pressure sensor attached to the pneumo hose of the diver to display the depth.
Extra Sensor	A sensor port that can be used for various purposes. For example, as a second depth sensor or a decompression tank sensor



#### Touchscreen

The DMS will have a 3.5" daylight touchscreen. This makes the system more userfriendly.

### 3

#### Divers

The DMS can support up to 3 divers.



#### Database

Each DMS will have an internal database that will store each recorded dive. This database can be configured to synchronise with other DMS's or with a network server.



#### Wifi Network

The DMS will create its own wifi network. Devices can connect to this network to enter data, retrieve files or to view the database.



#### Battery

The DMS will have an internal battery capable of powering the device for at least 6 hours.



#### Oxygen sensor

It will be possible to connect an external oxygen cell per diver. This oxygen cell will measure the oxygen percentage in the divers breathing gas. This data can be displayed and logged. An alarm can also be set on a minimum/maximum percentage.



#### Double Ethernet

The DMS will have a double ethernet port with a switch. This makes connecting multiple DMS's much simpler.



#### Project based Logging

Different projects can be set up in the DMS. A dive can be assigned to these projects and will log the corresponding project data, such as location, client, scope and more.



#### Replaceable

The DMS can replace the previous generation Digital Depth Gauge without any modifications or issues.

All functions, specifications and pictures are subject to change due to the ongoing development

## DMS New Digital Depth Gauge showcase

## Expected in Q3 2022

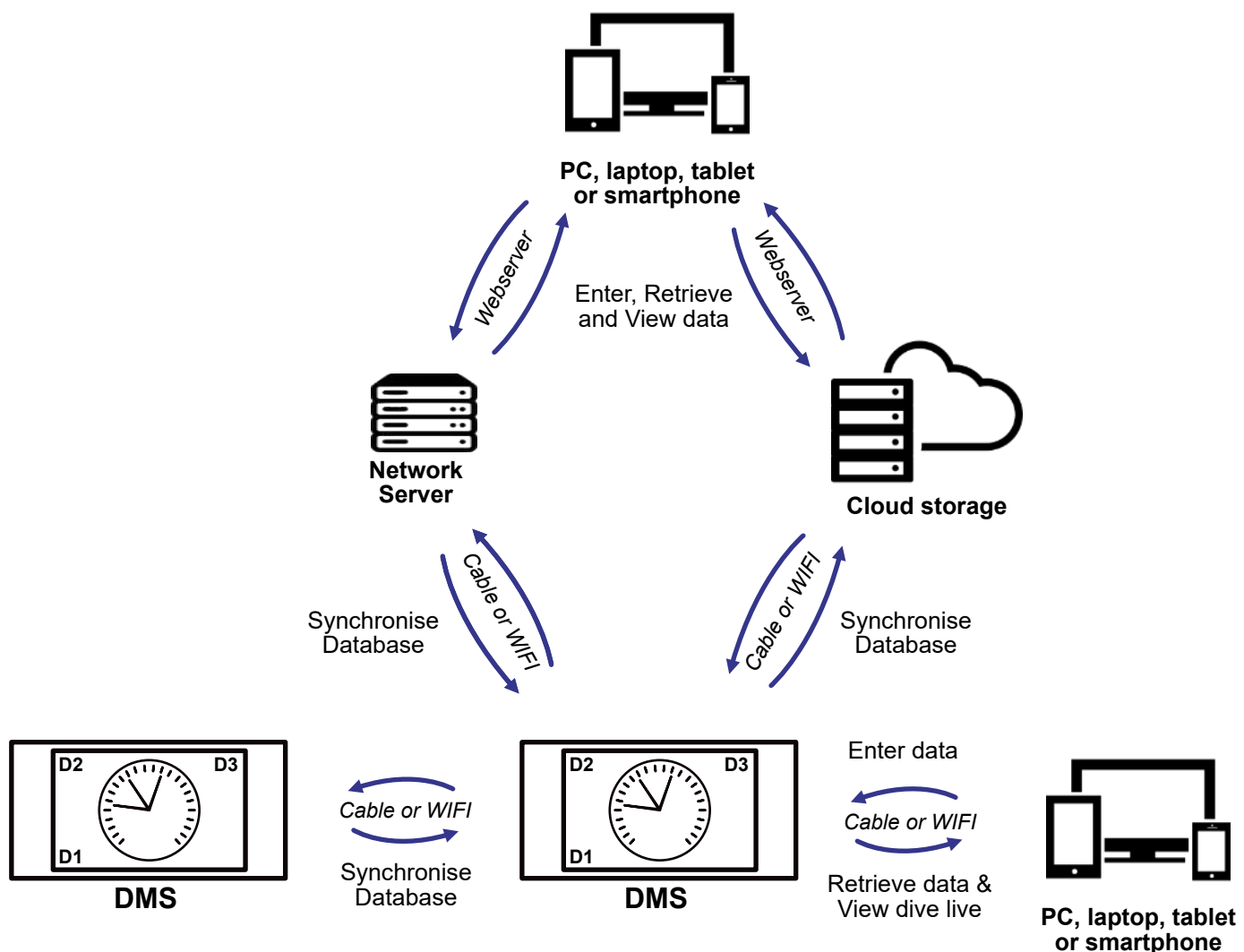
One of the key features is the improved logging capabilities and the more convenient storage and handling of these logs. The logging capabilities are mainly expanded with a project and personnel database (PPD). In this PPD you can store the information of your projects, such as scope of work, location, gas mixture and client. You can also store information on your personnel, such as names and ID's.

When you start a new dive the DMS will prompt you to choose a project, diver, supervisor and gas mixture, all of which are retrieved from the PPD. The DMS will then add all of this information to the dive log. During the dive the supervisor can make time-related comments in the log. If the dive is finished then the supervisor must verify it and then it is ready for synchronisation.

The DMS uses an SQL database for the storages of the logs. This database can be set up to synchronise over WIFI or cable with another DMS, Network server or Cloud storage. The network storage and cloud server can be accessed by an webserver.

### Logged Parameters:

- Depth & Maximum depth
- Start time (manual and auto)
- Dive time
- Oxygen percentage
- Extra sensor data
- Gas mixture
- Alarms
- Date
- Project
  - Scope
  - Location
  - Client
- Diver
- Supervisor
- Supervisor comments
- Supervisor verification



All functions, specifications and pictures are subject to change due to the ongoing development

**DMS** New Digital Depth Gauge showcase

**Expected in Q3 2022**

Specifications	1 Diver	2 Divers	3 Divers
Name	DMS-1	DMS-2	DMS-3
Number of divers	1	2	3
Screen	3.5" Daylight color touchscreen (480x320 pixels)		
Working Temperature	-10 ~ 60 °C		
<b>I/O</b>			
USB	1x 2.0		
Ethernet	2x RJ45		
Novabus	1x		
Power Supply	12-36 Vdc		
Alarm Output	1x <sup>1</sup>		
Depth sensor (HART)	1x	2x	3x
Oxygen sensor (mV)	1x	2x	3x
Input Switch (NC/NO)	1x	2x	3x
Pneumo sensor (4-20mA)	1x	2x	3x
Extra Sensor (4-20mA)	1x	2x	3x
Pneumo coupling	<i>Optional: 1x Male 1/4" BSP</i>		
Battery	5200 mAh @ 3.7V		
Runtime	>6 hours		
Width	144 mm		
Height	72 mm		
Depth	63 mm		
Notes	1. The alarm can either be powered by the DMS (on 3.3v) or by an external power supply.		

All functions, specifications and pictures are subject to change due to the ongoing development