



Features

- **960H resolution**
- **2 Channel Rec.**
- **Daylight Monitor**
- **PIP & PAP**
- **Text & Data overlay**
- **Snapshot button**
- **Camera Control**
- **Light Control**
- **Network connection**



The built in DVR with 10,4" daylight monitor can record both divers at the same time (each to an independent file). The monitor view is selectable between, 1 channel, 2 channels PAP (Picture & Picture) or 2 channels PIP (Picture in Picture). The smaller PIP window can be placed anywhere over the main window. Also the PIP size is selectable between ¼ or 1/9 size of the monitor.

Related Products:

- NSBC camera
- LUXR 3&6 Lights
- DDG
- DUR01 Umbilical
- BoBox
- DLR-3&4 cables
- DP diver gas panels
- SCC-1,2&3DR diver radio

NOVASUB Surface control case two diver radio with integrated camera and light control with DVR & 10.4" colour monitor.

The Novasub diver communication radio is based on the latest electronic technology and is specially designed for an outstanding diver and surface sound quality. The unit is standard fitted for a 2 diver connection and has a built in LED light control and video transmission over twisted pair or coax controller for each diver (CCTV).

The video controller is auto tunable for any cable up to 600 m. The unit has a mains and battery backup. Is powered with a built in smart battery charger and has a battery state condition monitoring. Standard the radio is fitted with a volume controllable external speaker amplifier. Both diver and tender voice are heard on the external speaker.

The radio is based on a 2 wire communication principal and has for each diver a PTT (Push To Talk) button. The communication type is "simplex", that is to say; the operator must press a button to speak. The sound of the diver is always heard, except when operators speaks to the diver. The operator at the surface can speak to each diver individually. Also the operator can activate the communication diver-diver (Cross Talk). The SCC can also be set for Round-Robin (4 wire comms). Each diver audio and video have an output for extra monitors and recording.

Video format

The DVR can record either in the standard D1 format or the new 960H wide format. The format can be set per channel. The 960H format is in PAL 960x576 pixels, compared to the D1 720x576 and increase of 35%. To really achieve the actual 960H resolution, use the latest Novasub NSBC cameras which actually have the 960x576 pixels resolution.

Text & Data overlay

Each channel has its own 4 lines of 36 characters overlay. One line is dedicated for use of the date/time with data. 2nd overlay is the name of the channel plus free text, and the remaining two overlay lines are free text. All overlay lines can be placed anywhere on the window. Also a snapshot can be made of each channel and is stored as a JPG on the hard disk. Optional diver data like depth and dive time can be added to the overlay. (see Novasub DDG Digital Diver Gauge and UDS-3 depth sensor)

Distributed by:

Specifications

Ext. Power supply	: 100-260 VAC, 50/60 Hz	Battery life	: 20 hours -> 2 diver comms only 2 hours -> 2 Divers Video&DVR 1 hours ->1 diver light&Video and DVR
Light control	: 100% dimmable per diver, max 30 watts, 12-30 vdc	Int. Power supply	: 24 vdc rechargeable battery with battery status indication, UPS function
Video out	: 1 per diver, 1Vpp/75 Ohm	Network	: Connection to network, DVR accessible via Browser
DVR	: Solid State HD recording, H264, avi 720x576 pixels@25 fps and 944x576 pixels@ 20 fps	Tender volume control	: Per diver
Video control	: Video transmission over twisted pair or coax, auto-tune to 600 m, 32 vdc (12,15,24 vdc optional)	Monitor	: 10,4" Daylight Monitor, 1000 candela
DVR control	: Panel keypad control & Mouse	Communication	: 2 wire - simplex, 4 wire - full duplex
Audio Out	: 1 per diver signal of 1Vpp	Recording time	: 100 hrs@ 960H best 1,2 Gb / hr. (120 Gb SSD-HD)
Diver to diver	: Cross-talk switch, full duplex (4 wire)	Ext. speaker	: Amplifier 10W/4-8 Ohm with volume control
Diver volume control	: Per diver	Recording channel	: 2 channel, per channel record button
Dimensions	: 546x350x247mm - 21,5x13,78x9,72 Inch	Video file	: Retrievable with USB memory stick (*.avi) or connection to PC via LAN
		Weight	: 16,8 kg

Connections

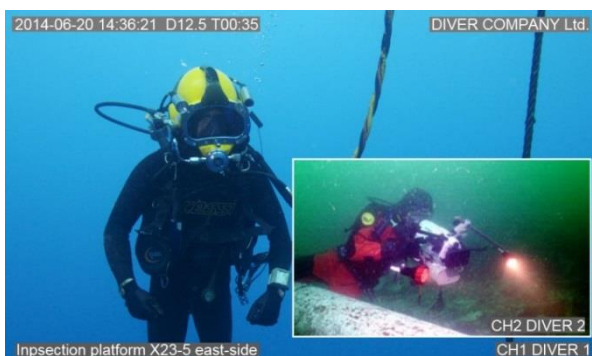
Audio out	: 2x RCA (Cinch)	Extra monitor	: HDMI
Headset/Mic	: Bulgin 8pin, audio out, Mic in, PTT	Video out	: 2x BNC
Keyboard	: USB-A	Ext. speaker	: 2x Banana screw sockets
Network	: LAN RJ45	Flash drive	: USB-A
Power in	: IEC C14 mates with C13	Diver comms	: 2x Banana socket per channel
Umbilical connector	: 2x Multi pin circular connector, comms, camera and light		

The DVR keypad has the following function:

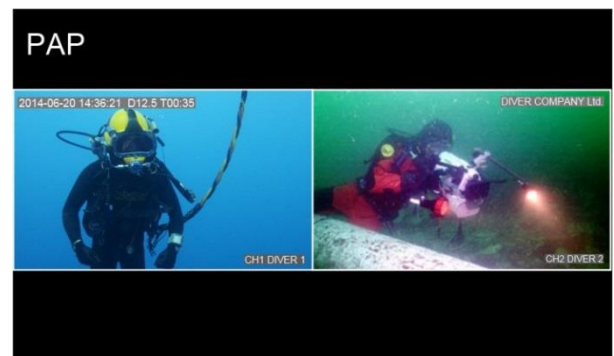
Channel selection 1 & 2	: Channel selection for overlay, camera, light and snapshot control	CAM	: ON/OFF camera
REC	: Start/Stop recording	Light (+/-)	: ON/OFF, dimming
SNAP	: Snapshot picture of video image (same resolution as video)	Arrows, OK	: Menu control DVR
VIEW	: Selection of view, full, PIP, PAP	Menu	: Access to Menu
ESC	: Escape in DVR menu	Play, STOP	: Access playback of recorded files

Optional

- Diver depth to overlay ; direct connection of UDS-3 depth sensor data to video overlay.
- DDG diver data to overlay ; DDG depth and dive/time data to video overlay.
- BoBox ; Breakout Box for remote comms control with both divers, 50 m cable.
- Thickness Gauge to overlay ; Tritex or Cygnus Thickness data to video overlay.
- Analog value to overlay ; any 0-10v or 4-20 ma signal data to video overlay.
- Remote control software ; Novasub DVR software to remote control and view the SCC-2DRVL-DVR G3.
- 4 channel viewing and recording.



PIP 1/4 size with Darkened text overlay



PAP horizontal with Darkened text overlay